



Harju KEK was established in 1956 and initially operated mainly in construction and electrical engineering fields. To date, several successful, independently operating undertakings have grown out of the company's subsidiaries – producers of building material and electrical equipment, specialized building companies, transport companies and electrical equipment shops that belong to Harju KEK Group. The parent company focuses on real estate and investment management in the Group. In 2000 the Group's total turnover amounted to 310 million kroons.

**AS Harju KEK** Paldiski mnt 21, Keila, Estonia  
 Tel + 372 6747 500, fax + 372 6747 501, h.kek@harjukek.ee  
 Mr. Ott Otsmann  
 Tel + 372 6747 480, fax + 372 6747 501, ott.otsmann@haret.ee



# KEILA INDUSTRIAL PARK



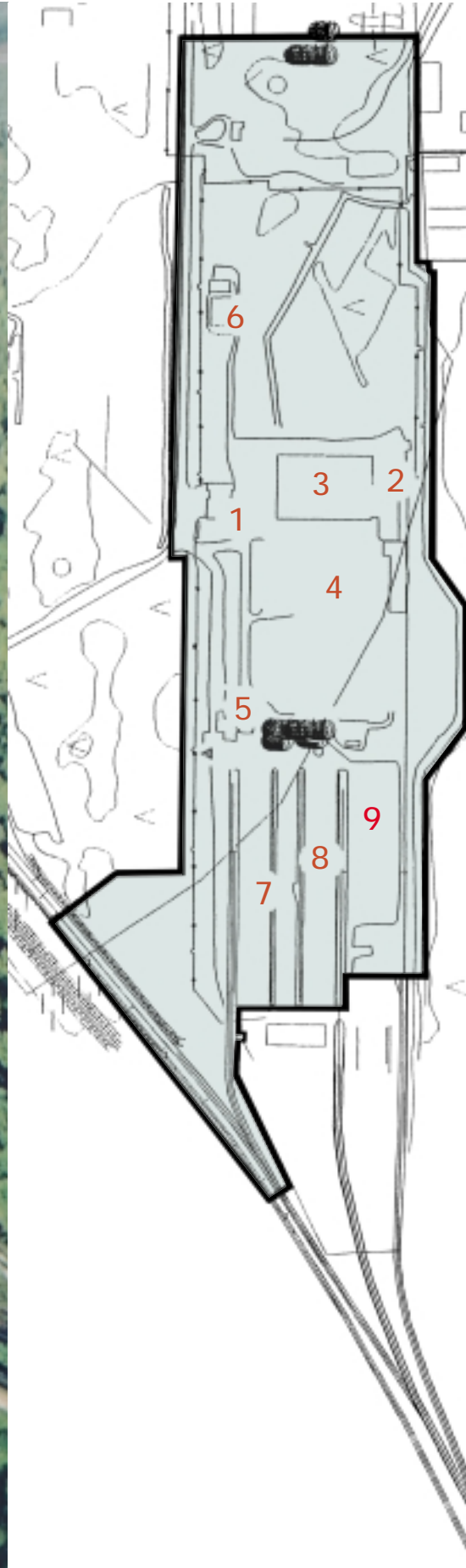
Harju KEK, a successfully functioning industrial park that lies on 48 hectares of land and is situated only at a 20-minutes car drive from Tallinn, capital of Estonia, or Paldiski, one of the best-known Baltic ports.

Prompted by the advantages of the industrial region, a new property has been acquired.

- total area 18.5 hectares;
- accessible by road and by rail. Access roads with asphalt cover. Total length of railway lines 3.9 km;
- ready infrastructure and utilities – electricity (power capacity 3x400 kW), water supply and sewer systems, rainwater drainage;
- the property is partly developed – gatehouse and weighbridge, administrative office and warehouses, maintenance workshop and pumping station. The property includes also an unfinished warehouse, mechanical and open loading areas. In total, 20,000 sq.m of asphalt-covered roads and stockyards;
- the site is partly surrounded with a concrete fence;
- the plot borders with industrial sites and railway lines.

# LOCATION OF THE PROPERTY: Tööstuse 7, Keila, Estonia

Scale: 1:5000



## 1. GATEHOUSE AND WEIGHBRIDGE

- 326 sq.m
- 2 storeys

## 2. ADMINISTRATIVE OFFICES

- 1235 sq.m
- 3 storeys

## 3. REPAIR AND MAINTENANCE WORKSHOP

- 4445 sq.m
- 1 storey

## 4. WAREHOUSE UNDER CONSTRUCTION

- 7261 sq.m
- 1 storey

## 5. WEIGHBRIDGE-ENTRANCE GATE

- 185 sq.m
- 1 storey

## 6. PUMPING STATION

- 162 sq.m
- 1 storey

## 7. MECHANICAL STOCKYARD

- 6,400 sq.m asphalt-covered area

## 8. OPEN STORAGE AREA

- 6,000 sq.m asphalt-covered area

## 9. RAILWAY LINK

- Loading docks
- A loading platform for 25 wagons.
- In addition, 2 railway storage sidings for up to 80 wagons



2. Administrative offices



3. Repair and maintenance workshop



4. Warehouse under construction



7. Mechanical stockyard



9. Railway link